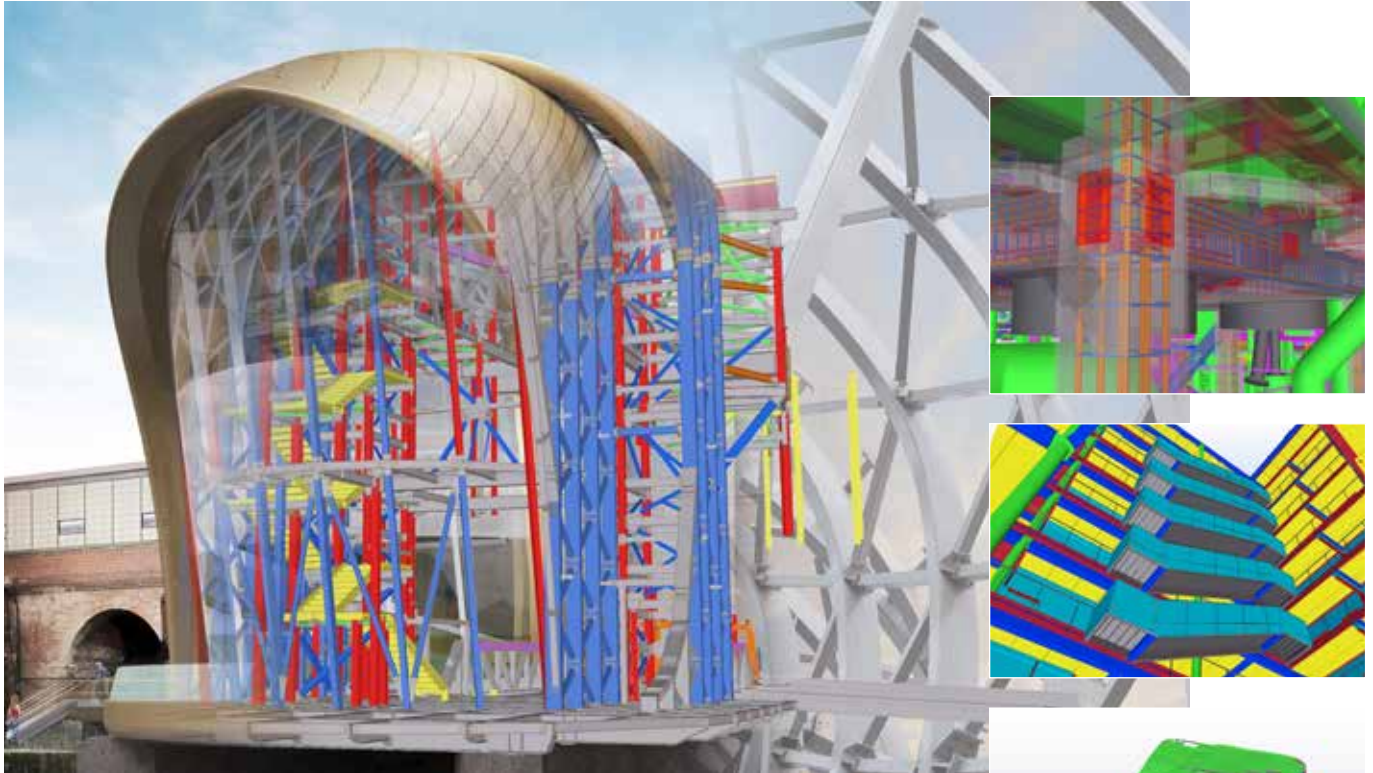


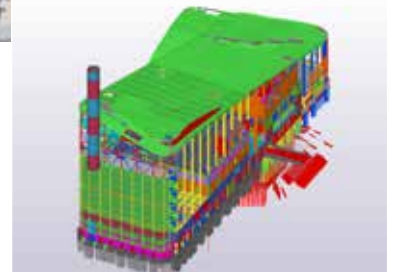
Tekla for Education



TRANSFORMING THE WAY THE WORLD WORKS



Lead your students through a visual tour. Tekla Structures allows virtually walking through a 3D construction model. Your students can explore structural components and details, and they will understand the design intent of different structures. Demonstrate all structures, clashes and safety risks while teaching students to use leading construction technology.



TEACH ENGINEERING AND CONSTRUCTION WITH LEADING TECHNOLOGY

Whether you are responsible for teaching or developing curriculum in civil engineering, structural engineering, construction management or steel and concrete detailing, using Tekla software in teaching helps you to show what exactly goes into a building: where the MEP and HVAC are in relation to the structures, rebar, wall elements or steel.

SHOW HOW CONSTRUCTION IS MANAGED TODAY

Tekla Education program gives you tools for effortlessly visualizing construction process for your students. And there is plenty of industry related content for you to use.

SUCCESSFUL GRADUATES

Every educator is concerned whether their students meet the qualifications that the market requires. Mastering the modern tools, practicing with realistic industry cases and knowing BIM will help students gain an important competitive edge upon graduation. It is important to teach the BIM workflow and improve the Level of Development (LOD) of models. Tekla software also allows you to simulate coordination and collaboration. Utilizing Tekla teaches the students to understand structures and BIM from the contractor and structural engineering viewpoint. Many of today's jobs require good BIM knowledge and skills in analysis and design.



SOFTWARE FOR TEACHING AND STUDENT ASSIGNMENTS

Special educational maintenance program provides unlimited Tekla software licenses, learning content and free student licenses making implementation easy. Tekla Structures is available in several languages and includes local environments. For teachers, the software comes with local technical support, and there is interactive learning content to extend students' understanding. For students there are free software licenses to use at home, as well as online learning material, case studies, and industry insight through Tekla Campus, the online education community.

PROMOTE & INSPIRE

Tekla Campus is an online academy for students who want to learn the basics of Tekla's BIM tools and improve their position in the job market. At Campus, students can download Tekla Structures Learning edition and utilize it for self-learning. The Campus also offers students interactive learning material and an opportunity to "showcase themselves".

campus.tekla.com

Tekla BIM Awards is an annual, global competition for construction modeling projects with a separate student category. For students, designing a full-blown competition project is a great way to boost their skills and success in the competition naturally helps raise your students' and school's profile. Or why not utilize real-life construction project information in teaching?

tekla.com/bim-awards

TEKLA MAINTENANCE

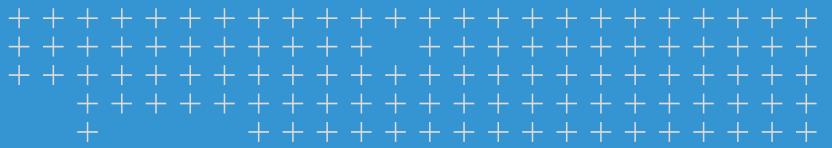
Tekla Maintenance secures your productivity with high quality user support, the latest software developments and additional tools.

Tekla's educational program includes Maintenance.

- All new versions, updates, features, service releases and improvements
- Local environments and 17 Tekla Structures languages
- Unlimited licenses of Tekla Software



Tekla
Maintenance



Together we are shaping a smarter future for construction

TEKLA SOFTWARE BY TRIMBLE

Trimble is a technology company with a vision of transforming the way the world works. Trimble's construction offering ranges from total stations to advanced software, giving the industry tools to transform planning, design, construction and operation of buildings. The company also has products for trades like logistics and agriculture.

TRIMBLE BUILDINGS

In addition to Tekla, Trimble Buildings brands include names like SketchUp and Manhattan Software, targeting architects, engineers, fabricators, MEP contractors, general contractors and construction managers, and building owners. The software solutions promote constructible models and collaboration. Trimble Buildings offering blend groundbreaking innovations and practical features, helping the industry achieve transformative results.

TEKLA SOLUTIONS

Tekla software is at the heart of the design and construction workflow, building on the free flow of information, constructible models and collaboration. It is the people who make the difference, while Tekla gives tools for realizing projects around the world from housing and bridges to factories and skyscrapers. Good communication and elimination of waste make the industry more sustainable and cost effective, improve your projects and in the end your customers' happiness.

- **Tekla Structures** is the most developed Building Information Modeling software on the market. It makes accurate, constructible modeling of any structure possible.
- **Tekla Structural Designer** gives engineers the power to analyze and design buildings efficiently and profitably.
- **Tekla Tedds** automates repetitive structural calculations.



Copyright © 2016 Trimble Solutions Corporation. All rights reserved. Trimble and Tekla are registered trademarks in the United States, in the European Union and in many other countries. For more information, see www.tekla.com/tekla-trademarks.